



**Beaufort County**  
**Public Works**  
**Stormwater Infrastructure**  
*Project Summary*

**Project Summary:** St Helena Island Vacuum Truck - Shiney Road, Ragweed Circle,  
Simmons Road and Mosse Road

**Activity:** Routine/Preventive Maintenance

**Narrative Description of Project:**

Jetted (2) driveway pipes and (3) crossline pipes.

**Duration:** 1/19/16 - 6/8/16

<b>2016-309A / St Helena Island Vacuum Truck</b>	<b>Labor Hours</b>	<b>Labor Cost</b>	<b>Equipment Cost</b>	<b>Material Cost</b>	<b>Contractor Cost</b>	<b>Indirect Labor</b>	<b>Total Cost</b>
AUDIT / Audit Project	1.0	\$23.49	\$0.00	\$0.00	\$0.00	\$13.23	\$36.72
CLPJT / Crossline Pipe - Jetted	30.0	\$698.60	\$130.20	\$63.57	\$0.00	\$457.40	\$1,349.77
DPJT / Driveway Pipe - Jetted	34.0	\$781.58	\$147.56	\$53.62	\$0.00	\$508.47	\$1,491.23
ONJV / Onsite Job Visit	7.0	\$262.10	\$24.90	\$18.40	\$0.00	\$190.27	\$495.67
SVCREQ / Service Request	2.0	\$91.20	\$7.24	\$1.84	\$0.00	\$67.92	\$168.20
<b>2016-309A / St Helena Island Vacuum Truck 2 Sub Total</b>	<b>74.0</b>	<b>\$1,856.97</b>	<b>\$309.90</b>	<b>\$137.43</b>	<b>\$0.00</b>	<b>\$1,237.29</b>	<b>\$3,541.59</b>
 <b>Grand Total</b>	 <b>74.0</b>	 <b>\$1,856.97</b>	 <b>\$309.90</b>	 <b>\$137.43</b>	 <b>\$0.00</b>	 <b>\$1,237.29</b>	 <b>\$3,541.59</b>

Before



During



After







Project: St. Helena  
Island Vacuum  
Truck- Shiney Road  
Map #1

Activity: Routine/  
Preventive  
Maintenance

Project #:  
2016-309A

Township/SW Dist:  
St. Helena Island/8

Completed:  
June 2016

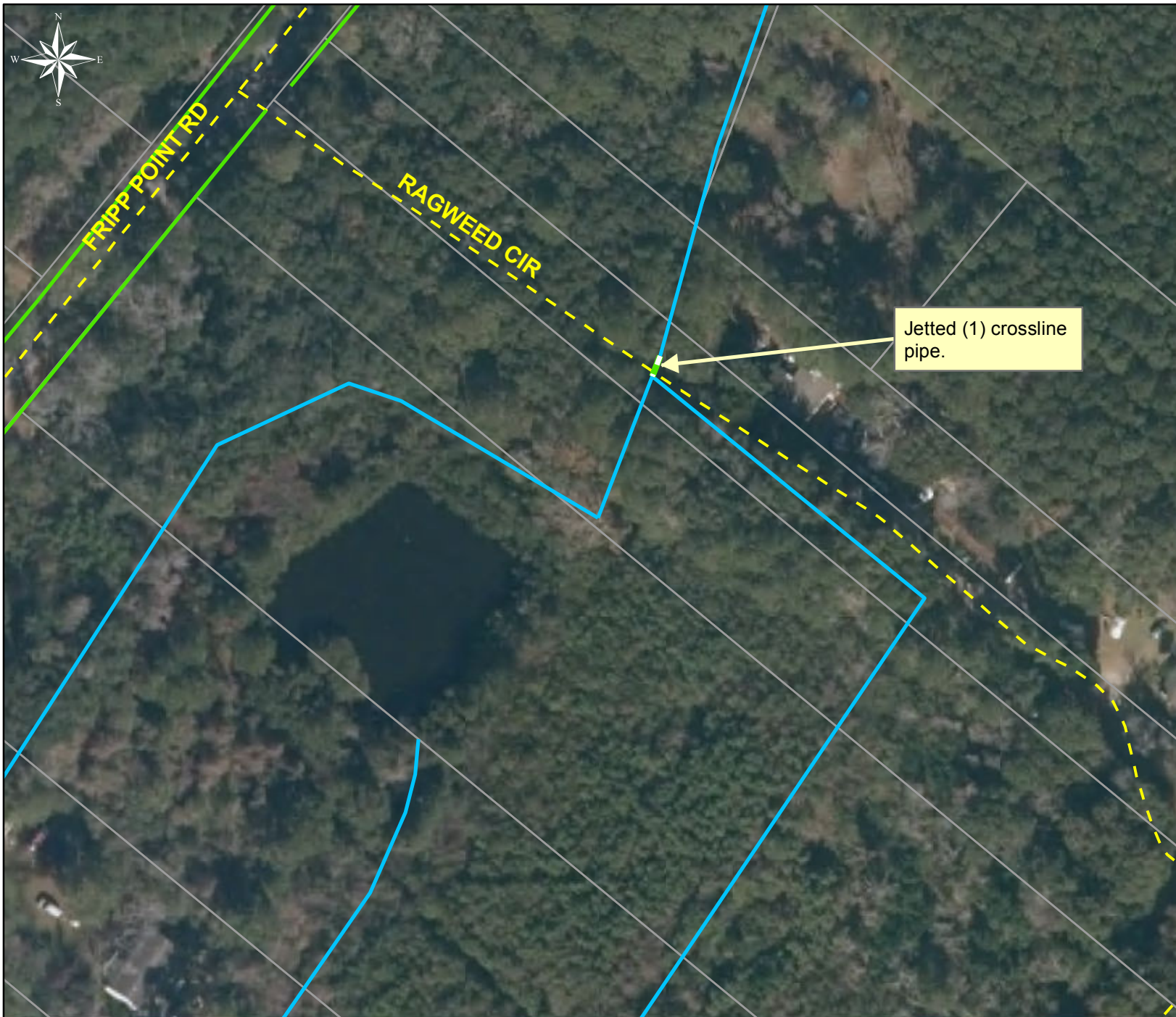
Legend	
Drainage Type	
	Access Pipe
	Bleeder Pipe
	Channel Pipe
	Channel
	Stream
	Crossline Pipe
	Driveway Pipe
	Lateral
	Lateral Pipe
	River
	Road Pipe
	Roadside
	Roadside Pipe

0 100 200 400 600 800  
Feet

1 inch = 420 feet

Prepared By: BC Stormwater Management Utility  
Date Print: 09/27/2016  
File: C:\project summaries map\St. Helena Island Vac Truck- Shiney Road Map1\_2016-309A





Project: St. Helena  
Island Vacuum  
Truck- Ragweed  
Circle  
Map #2

Activity: Routine/  
Preventive  
Maintenance

Project #:  
2016-309A

Township/SW Dist:  
St.Helena Island/8

Completed:  
June 2016

#### Legend

##### Drainage Type

- Access Pipe
- Bleeder Pipe
- Channel Pipe
- Channel
- Stream
- Crossline Pipe
- Driveway Pipe
- Lateral
- Lateral Pipe
- River
- Road Pipe
- Roadside
- Roadside Pipe

0 25 50 100 150 200  
Feet

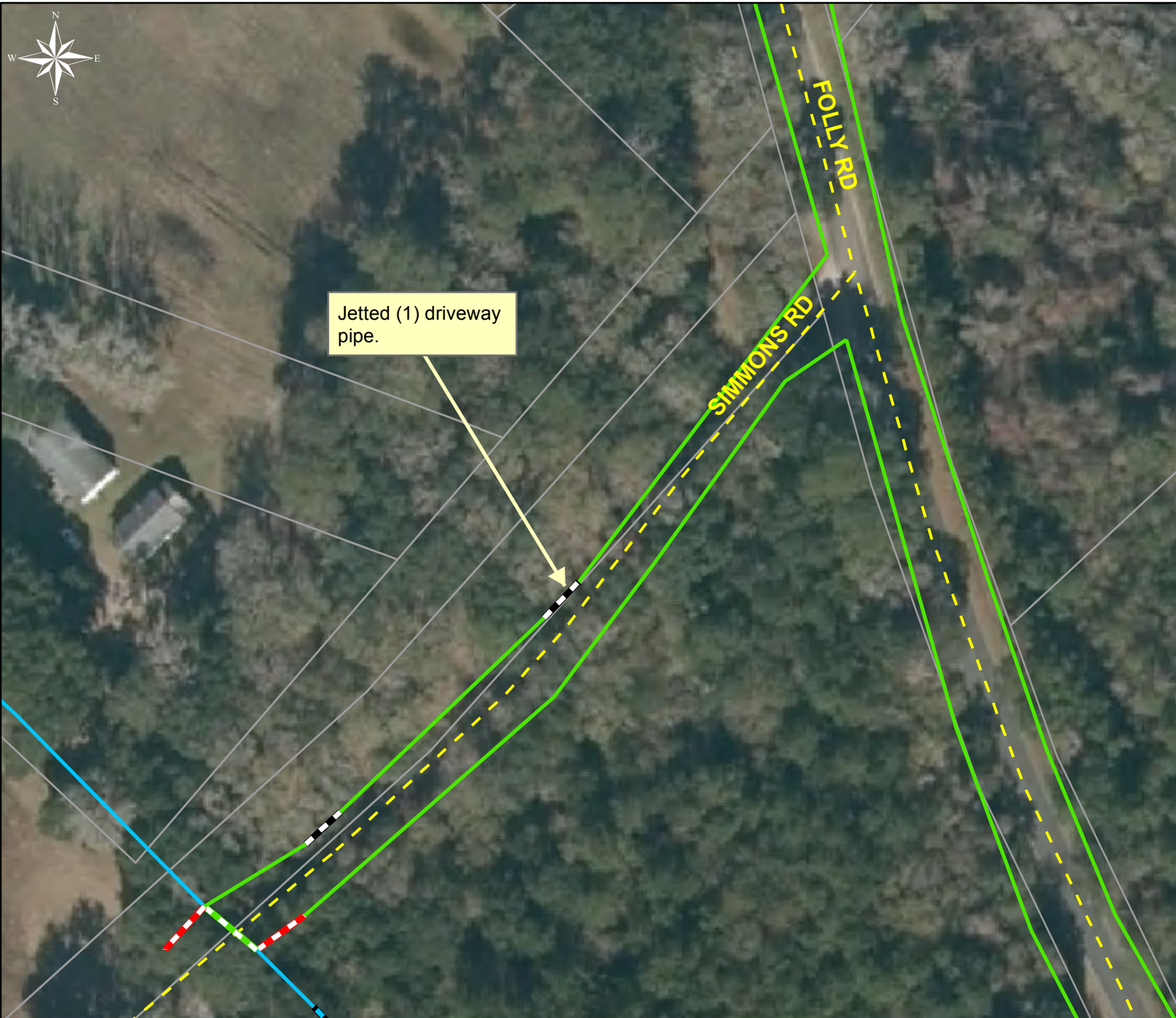
1 inch = 100 feet

Prepared By: BC Stormwater Management Utility

Date Print:09/27/16

File:C:\project summaries map/St. Heena Island Vacuum Truck-Ragweed Circle Map#2\_2016-309A





Project: St. Helena  
Island Vacuum  
Truck- Simmons  
Road  
Map #3

Activity: Routine/  
Preventive  
Maintenance

Project #:  
2016-309A

Township/SW Dist:  
St. Helena Island/8

Completed:  
June 2016

### Legend

#### Drainage Type

- Access Pipe
- Bleeder Pipe
- Channel Pipe
- Channel
- Stream
- Crossline Pipe
- Driveway Pipe
- Lateral
- Lateral Pipe
- River
- Road Pipe
- Roadside
- Roadside Pipe

0 20 40 80 120 160  
Feet

1 inch = 83 feet

Prepared By: BC Stormwater Management Utility  
Date Print: 09/27/2016

File: C:\project summaries map\St. Helena Island Vac Truck- Simmons Road Map3\_2016-309A



Project: St. Helena  
Island Vacuum  
Truck- Mosse  
Road  
Map #4

Activity: Routine/  
Preventive  
Maintenance

Project #:  
2016-309A

Township/SW Dist:  
St.Helena Island/8

Completed:  
June 2016

### Legend

#### Drainage Type

- Access Pipe
- Bleeder Pipe
- Channel Pipe
- Channel
- Stream
- Crossline Pipe
- Driveway Pipe
- Lateral
- Lateral Pipe
- River
- Road Pipe
- Roadside
- Roadside Pipe

0 15 30 60 90 120  
Feet

1 inch = 67 feet

Prepared By: BC Stormwater Management Utility

Date Print:09/27/16

File:C:\project summaries map\St. Heena Island Vacuum Truck-Mosse Road Map#4\_2016-309A